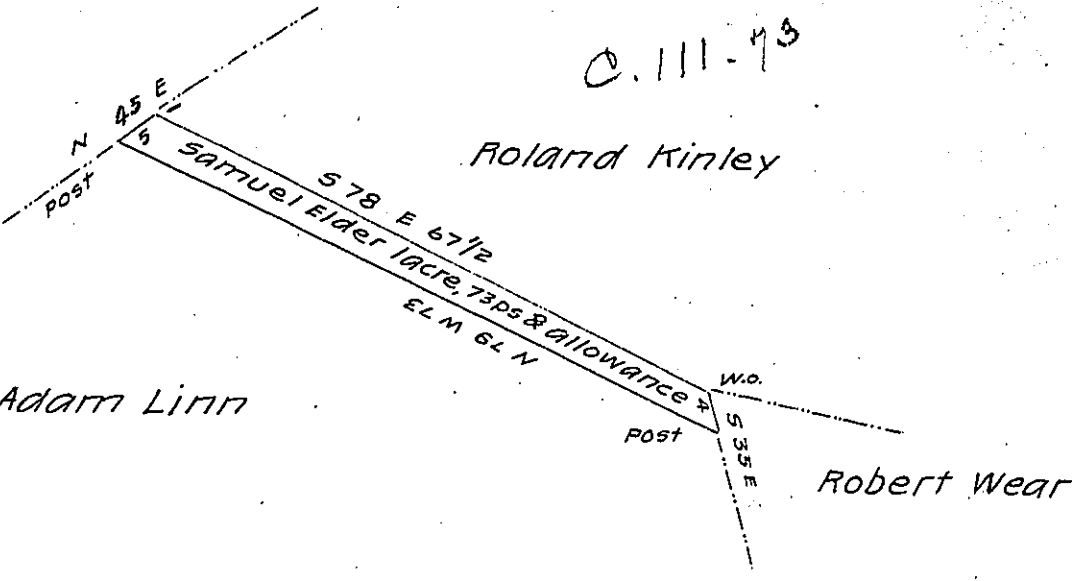


Thomas West

C. 111-13



Roland Kinley

Adam Linn

Robert Wear

January 7<sup>th</sup> 1859

Surveyed for Samuel Elder the above tract of land contain-  
 ing one acre 73 ps and allowance of six per cent situate in  
 Wheatfield township Indiana County adjoining lands War-  
 rented in the name of Roland Kinley, Adam Linn and other-  
 By virtue of a warrant dated the 31<sup>st</sup> day of December A.D. 1858.

David Peelor

County Surveyor

John Rowe Esq

Surveyor General

IN TESTIMONY that the above is a copy of the original remaining on file in  
 the Department of Internal Affairs of Pennsylvania, made  
 conformably to an Act of Assembly approved the 16th day of  
 February, 1833, I have hereunto set my Hand and caused  
 the Seal of said Department to be affixed at Harrisburg,  
 this nineteenth day of August 1904

*Grace B. Brown*  
 Secretary of Internal Affairs.